

Learn more,
make a plan
& take action:

**VEEP.ORG/
POSTER-2020**



OUR MISSION

is to build a deep understanding of energy through education, encouraging choices that result in sustainability in our communities, economy and environment.

more
resources at
VEEP.ORG

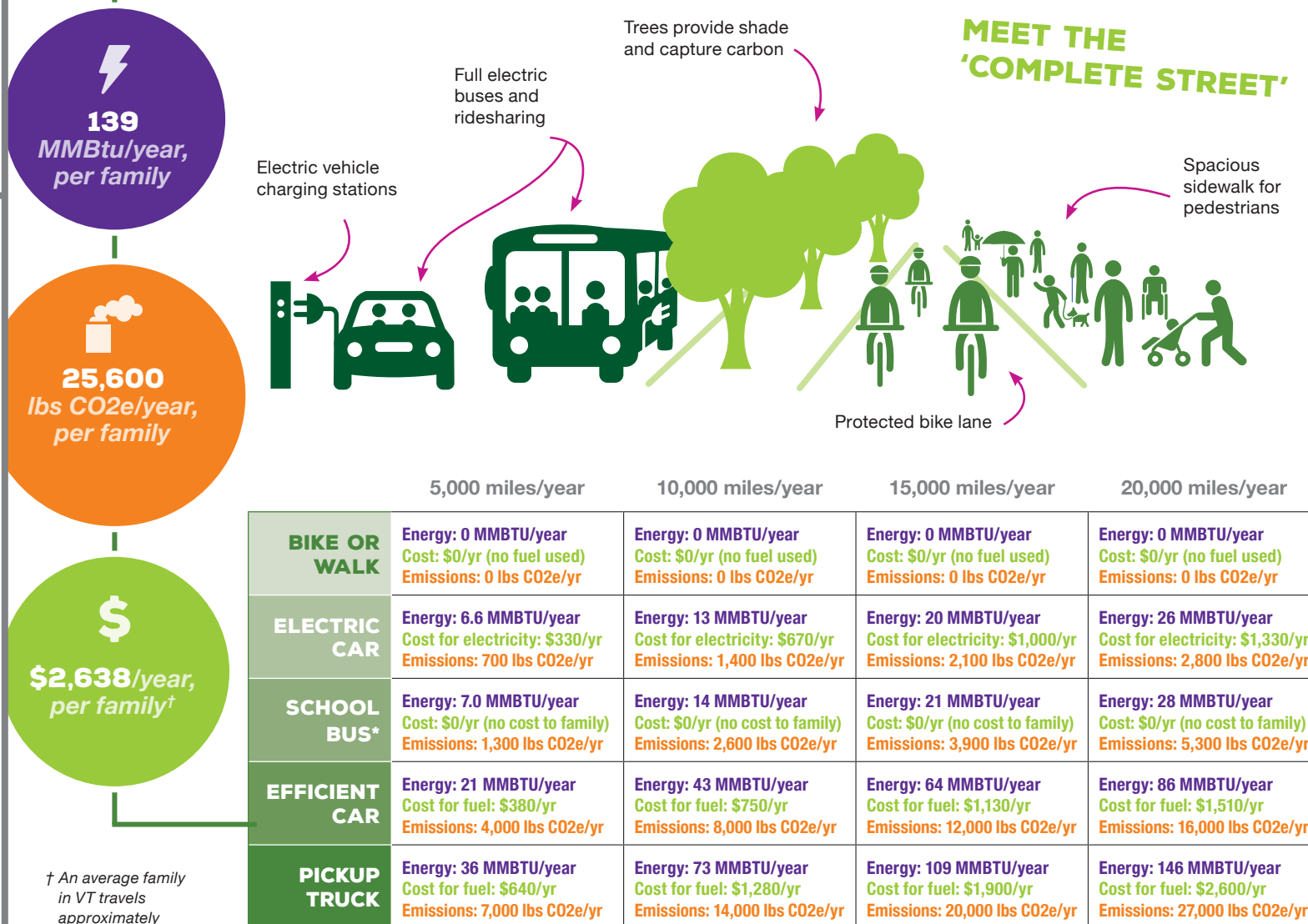
info@veep.org
802-552-8674
Montpelier, VT

Produced by VEED, 2020.
For footnotes and more
detail, go to [veep.org/
poster-2020](http://veep.org/poster-2020).

FROM THE 'ENERGY, ECONOMY, CLIMATE & YOU!' POSTER

TRANSPORTATION

Is your family traveling differently during COVID?
How much do you spend on transportation?
What can we learn from that for the future?



† An average family in VT travels approximately 24,000 miles per year in personal vehicles.

* The numbers for the school bus are based on the assumption that the bus is ¾ full and 2 children from each household are riding. It assumes that the family does not have to pay to use the school bus (even though it does cost the community to run a bus).